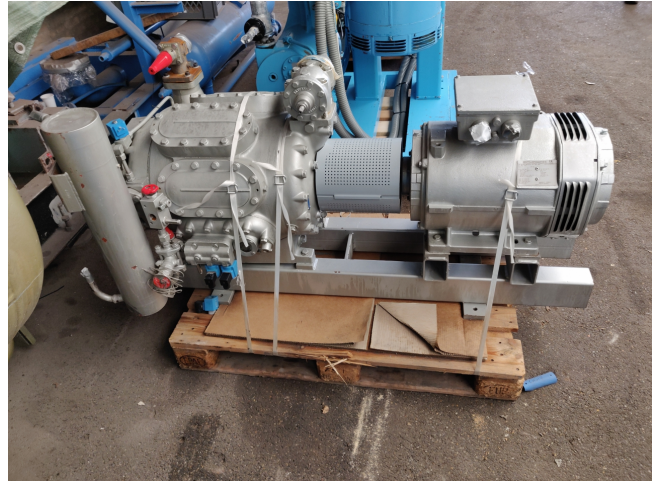


Sabroe TCMO 28

Specifications

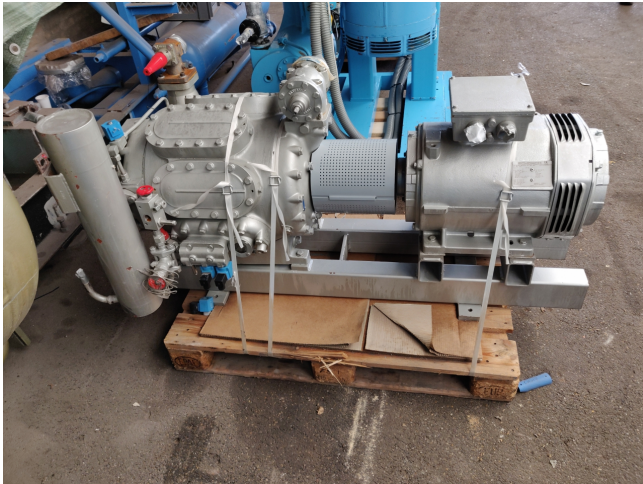
Marca	Sabroe
Tipo	TCMO 28
Refrigerante	Freon
kW at 0°C/+40°C	108
kW at -5°C/+40°C	89.4
kW at -10°C/+40°C	73
kW at -20°C/+40°C	47.8
kW at -30°C/+40°C	29.7
kW at -40°C/+40°C	17.4
Electromotor Specs	30 kW
Comentarios	electromotor 30 kW / 1465 RPM / 400 V
Comentarios	R404a - R22 or other freon types
Tamaños	1550x800x900 mm (LxWxH)
Stock	1

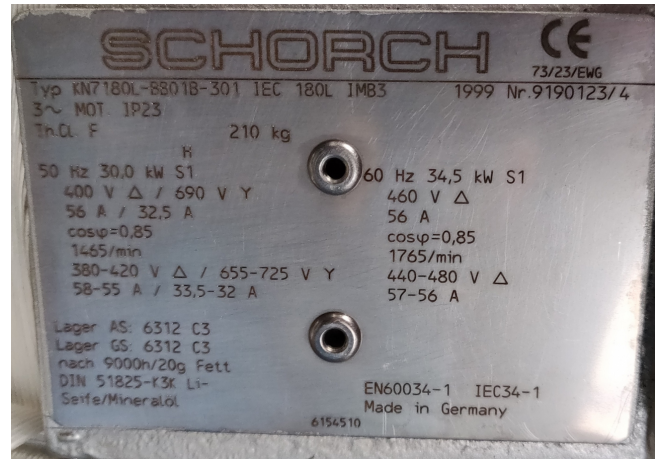


Description

Used Sabroe TCMO 28

Used Sabroe TCMO 28 piston compressor, R404A refrigeration. Our capacity table is based on R404A. For all the other specs (if available), see the picture of the manufacturer model plate or the attached pdf file. *Why choose for HOSBV? Were not only the largest used refrigeration specialist in Europe, but also, we deliver all equipment including an extensive test, warranty and industrial cleaning. *Optional we can also perform a new paint job and arrange the logistics.





Model	Number of cylinders low/high-pressure side	Swept volume at 1500 rpm		Nominal capacities in kW R22*		Unit dimensions in mm			Weight excluding motor kg	Sound pressure level at 1500 rpm dB(A)	Sound pressure level at 3000 rpm dB(A)
		m³/h	m³/h	5500 rpm	5800 rpm	L	W	H			
TCM0-20	6/2	190	255	25	24	1400-1750	700	1000	500	69	71
TCM0-30	6/2	300	407	50	60	2151-2915	1052	1347	1746	80	82
TSMC 200 S	6/2	424	509	66	79	2151-2915	1052	1347	1781	81	83
TSMC 200 E	6/2	509	N/A	81	N/A	2151-2915	1052	1347	1796	81	83
TSMC 116 S	12/4	679	814	100	121	3129-3737	1127	1445	2751	81	83
TSMC 116 L	12/4	848	1028	133	159	3129-3737	1127	1445	2841	82	84
TSMC 116 E	12/4	1028	N/A	163	N/A	3129-3737	1127	1445	2895	83	84